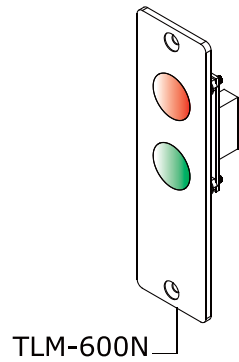
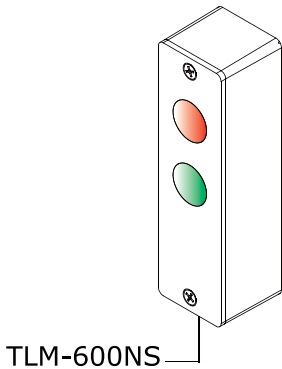
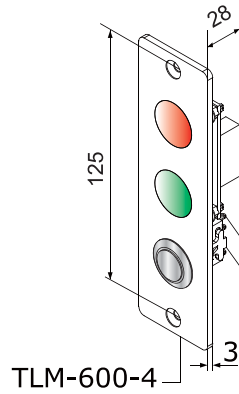
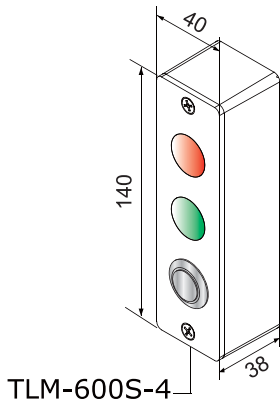


# TLM-600 Series Door Status Indicator

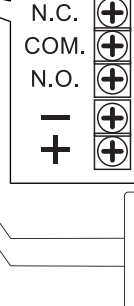
(Stainless Steel Faceplate)

Operating Voltage 12/24VDC  
Current Draw 40mA/12VDC  
50mA/24VDC  
Switch Double pole  
double throw



Door Status  
Locked or Unlocked Status

Jumper

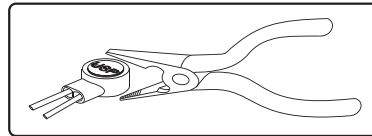


Power Supply

Fail-Safe Mode  
Electric Lock  
(MUST install a Varistor)

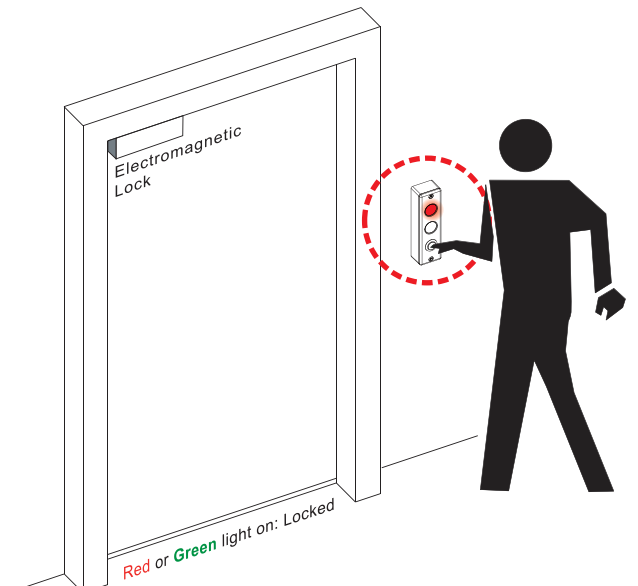
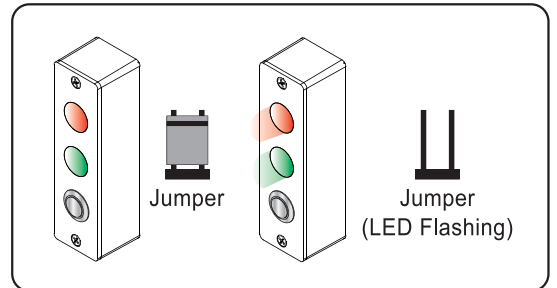
Exit Button

DG-800  
Stand Alone Reader



**Butt Splice (IDC) Connector**

Place the wire inside the connector and use a crimp or plier to press down on the head of the connector evenly.



Changeable LED color for locked or unlocked status