

Electric Strike Installation Instructions

GK460 Series

Specifications

The strike is polarity insensitive

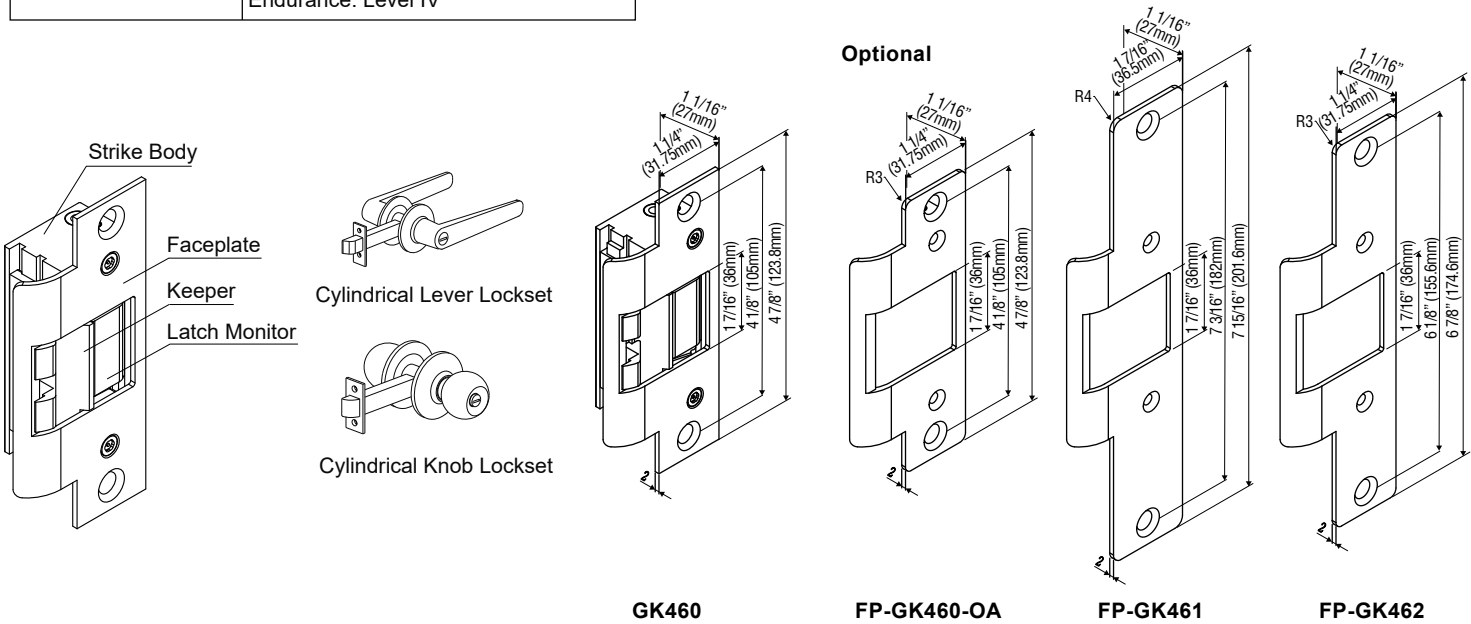
GK460 series of electric strikes are designed for use with cylindrical locksets. The strikes can be configured to fail-safe or fail-secure on site.

Operating Voltage	12/24VDC
Current Draw	300mA/12VDC, 150mA/24VDC
Operating Temperature	For indoor use: + 14°F to + 120°F (-10°C to + 49°C) For outdoor use: -31°F to +151°F (-35°C to + 66°C)
Humidity	0% to 85% Non-condensing
Keeper Width	1 7/16" (36mm)
Static Strength	1,500 lbs (680Kg)
Dynamic Strength	70 ft-lbs
Endurance	250, 000 cycles (UL tested) 1,000,000 cycles (Factory tested)
Performance Level	Destructive Attack: Level 1 Line Security: Level 1 Standby Power: Level 1 Endurance: Level IV

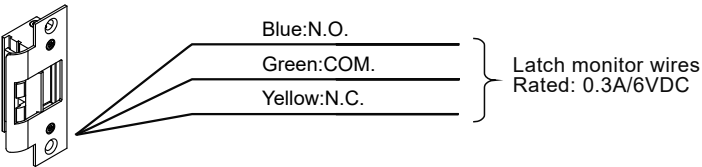
Model	Latch Monitor	Body Construcion	Application	Frame	Latch Throw
GK460	—	Zinc Alloy	Indoor	Hollow Metal	9/16" (15mm)
GK460M	●				
GK460-ST	—	Stainless Steel	UL1034 Outdoor	Hollow Metal	9/16" (15mm)
GK460M-ST	●				

UL Requirements

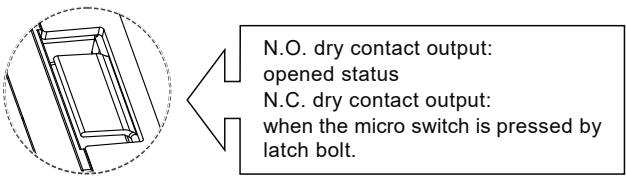
- Wiring methods shall be in accordance with NFPA70.
- The GK460 series is intended to be used with UL Listed Exit Hardware.
- The GK460 series shall not impair the intended operation of an emergency exit.
- The GK460 series shall not impair the operation of panic hardware mounted on the door.



Latch Monitor

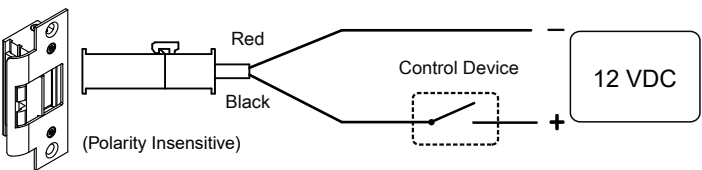


Latch Monitor

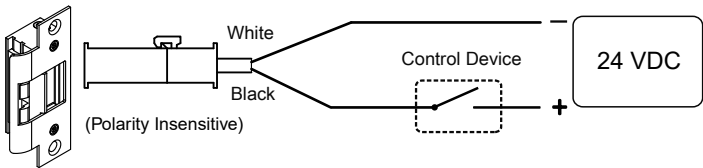


Dual Voltage (12V/24V)

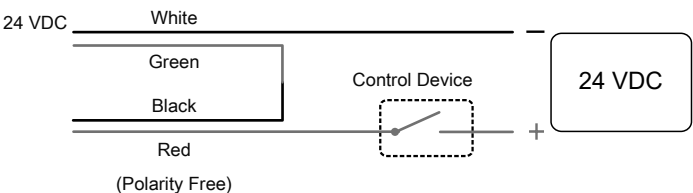
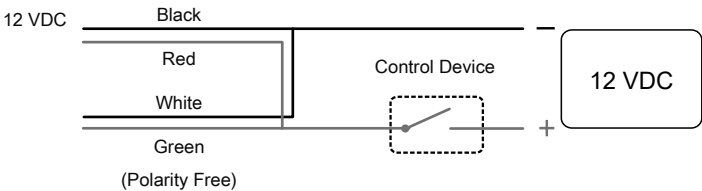
For 12VDC Operation:



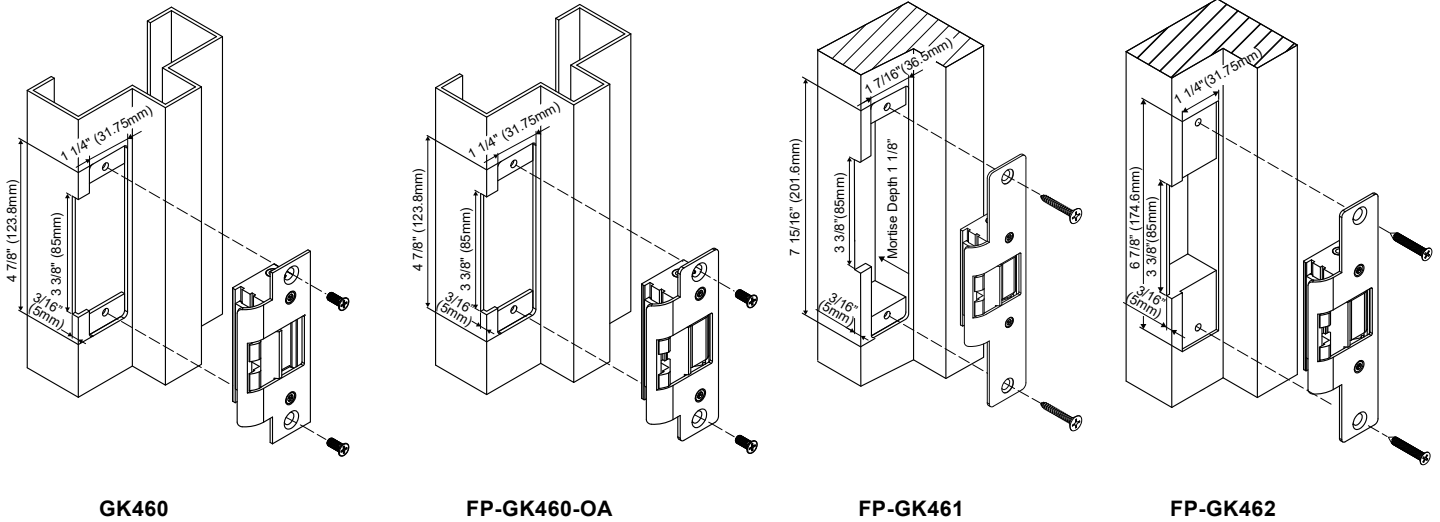
For 24VDC Operation:



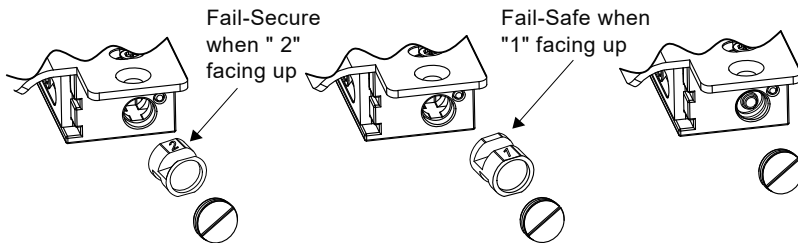
Dual Voltage



Installation on Wood and Hollow Metal Frame:



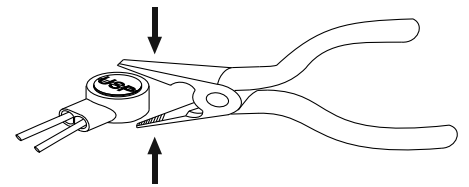
Fail-Safe / Fail-Secure Reversible



1. Remove the plug and take out the round screw.
2. Reverse the round screw.
3. Put back the round screw and plug.

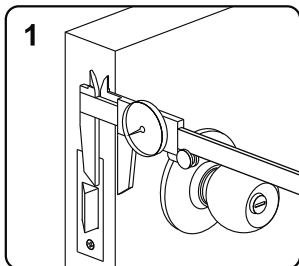
*Factory default setting is Fail-Secure.

Installing the Crimp Connectors

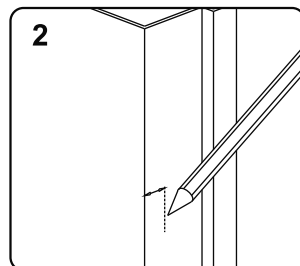


Place the wire inside the connector and use pliers to press down on the head of the connector evenly.

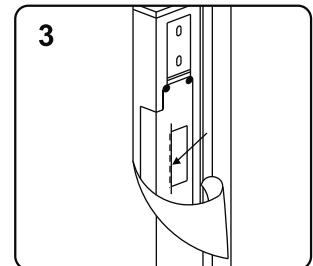
Installation Steps



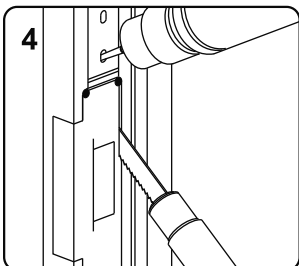
Measure the vertical and horizontal position of the latch bolt on the door leaf



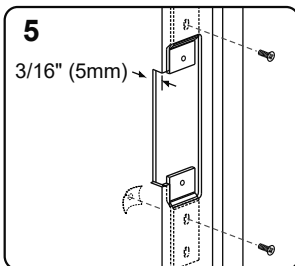
Mark the position of the latch bolt on the door jamb as shown in figure



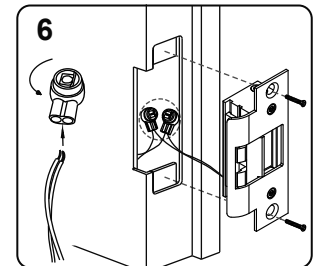
Align the installation template to the marked line



Drill and cut the frame according to the template



Install the mounting tabs



Connect to the power and test the electric strike before finally mounting the unit



Note

Please ensure that there is no back pressure on the keeper from the latch. As with most strikes this may cause the strike to bind and malfunction. It could also cause undo pressure on the solenoid and eventual failure of the strike.