

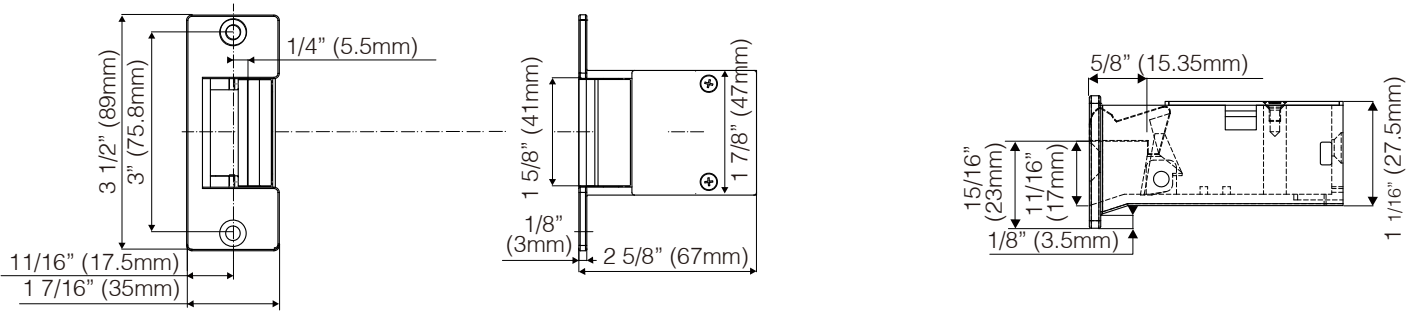
# GK200 Series Electric Strike Installation Instructions

## Features

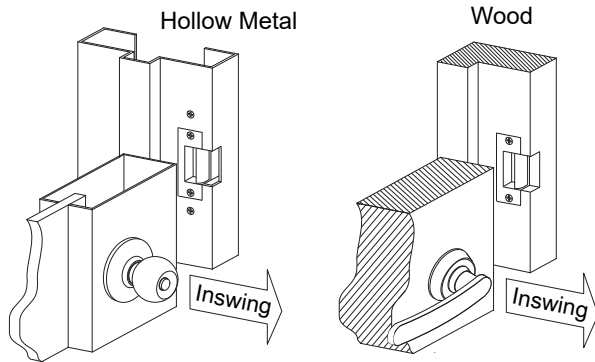
- Secure, economical and durable solution for gates
- Water drainage function for gates or semi-outdoor applications
- One piece cast zinc alloy construction
- Use with bored cylindrical locksets or GEM LS-2200 door latch

## Specifications

- Voltage:
  - GK200-1224** 12/24 VDC/AC Intermittent Duty
  - GK200-0816** 3-6 VDC, 8-16 VAC Intermittent Duty (Intermittent use: Not to exceed 20 seconds)
- Operating Temperature:  $-10^{\circ}\sim 49^{\circ}\text{C}$  ( $14^{\circ}\sim 120^{\circ}\text{F}$ )
- Humidity: 0~85% non-condensing
- Latch Throw: 9/16" (15mm)
- Cycle Test: 250,000+ cycles
- Fail-secure
- Keeper Width: 1 5/8" (41mm)
- Holding Force: 1,000 lbs (454Kg)
- Finish: Silver or Brass
- Weight: 343g

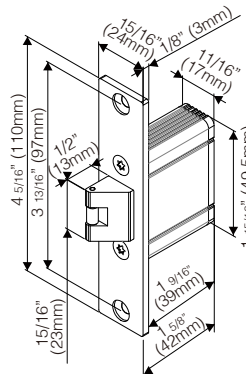


## Frame Applications

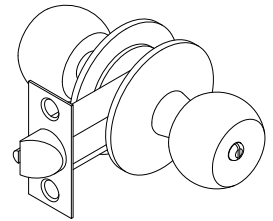


## Compatible Locks

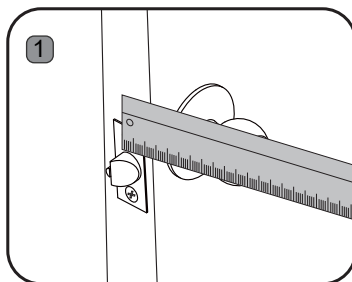
GEM LS-2200 Door Latch  
(Sold separately)



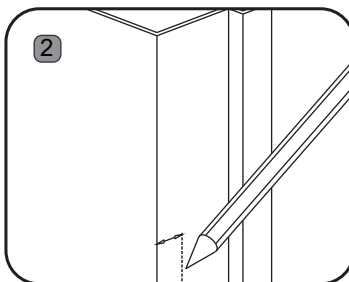
Cylindrical Lock



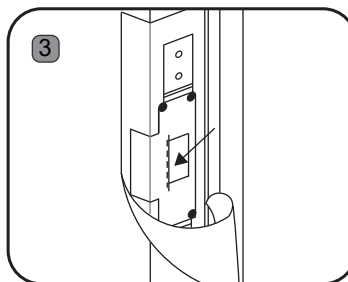
## Electric Strike Installation



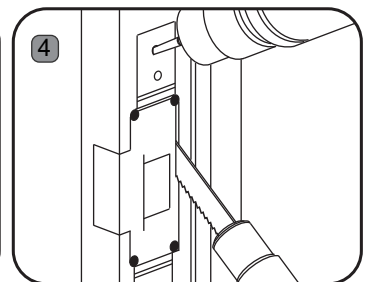
1 Measure latch position



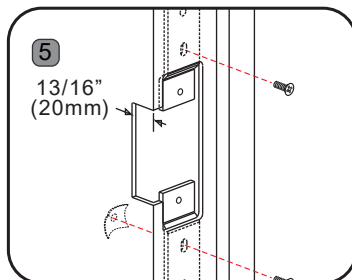
2 Mark latch position line



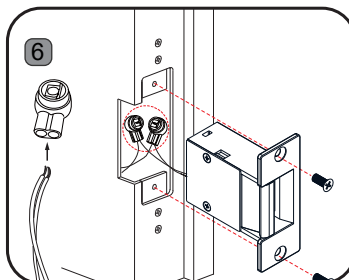
3 Attach sticker template to the marked center line



4 Drill and cut the frame according to the template



5 Attach mounting tabs if needed



6 Connect the wires using the crimp connectors, then test the strike, ensure you give it correct voltage

### Installing the Crimp Connectors:

Crimp connectors are provided to make wiring connections easier and more reliable. To install the connectors:



1. Insert the wires into the connector.
2. Use a crimping tool or pliers to evenly press down on the head of the connector.