

Electric Strike Installation Instructions
GK1800 Series

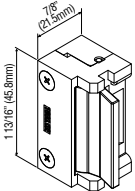
The GK1800 series electric strikes are designed for installation in wood or hollow metal jambs/frames for access control of cylindrical, mortise or rim locksets. They are available to accommodate different frames and locksets.

Specifications

Model	GK1810,GK1820,GK1830,GK1830M, GK1840,GK1850,GK1860,GK1870, GK1880,GK1885
Operating Voltage	12/24VDC
Current Draw	Dual Voltage: 180mA/12VDC,90mA/24VDC
Operating Temperature	32°F to 120°F (0°C to 49°C)
Humidity	0% to 85% Non-condensing
Latch Throw	Up to 5/8"(16mm) latch with 1/8"(3mm) door gap
Strike Depth	1/2" (13 mm)
Keeper Width	1 1/2" (37.5 mm) (Accepts 1 6/17" (36 mm) latch bolt)
Static Strength	500 lbs (226Kg) UL Witness test: 700 lbs
Dynamic Strength	50 ft-lbs
Endurance	250,000 cycles (UL tested) 1,000,000 cycles (Factory tested)
Body Construction	Zinc alloy
Faceplate Material	Stainless steel (GK1810, GK1850, GK1880, GK1885: Zinc alloy)
Frame Application	Metal or Wood
Latch Monitoring	Rated at 1A/125VAC (GK1830M Only)
Performance Level	Destructive Attack: Level I Line Security: Level I Standby Power: Level I Endurance: Level IV

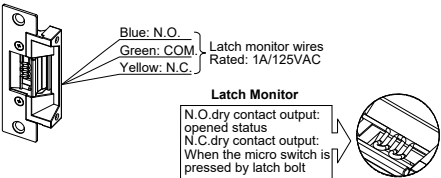
UL Requirements

- For indoor use only.
- Wiring methods shall be in accordance with NFPA70.
- The GK1800 series is intended to be used with UL Listed Exit Hardware.
- The GK1800 series shall not impair the intended operation of an emergency exit.
- The GK1800 series shall not impair the operation of panic hardware mounted on the door.

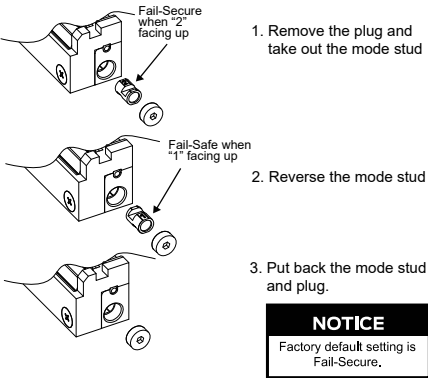


GK1800 Series Strike Body

Connecting Diagram For GK1830M Only



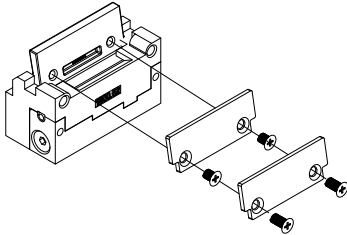
Fail-Safe / Fail-Secure Reversible



Keeper Shim Installation

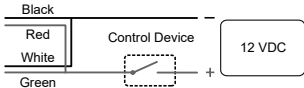
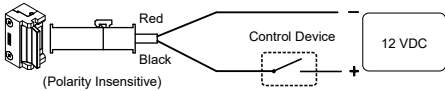
If additional horizontal adjustment is needed, 1 or 2 keeper shims can be added as illustrated below.

If adding one single shim, use the 3 x 4 screws. If adding two shims, use the 3 x 5 screws.

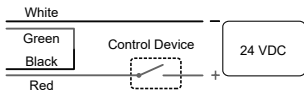
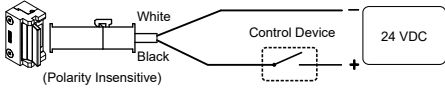


12/24 VDC Plug-In Wiring

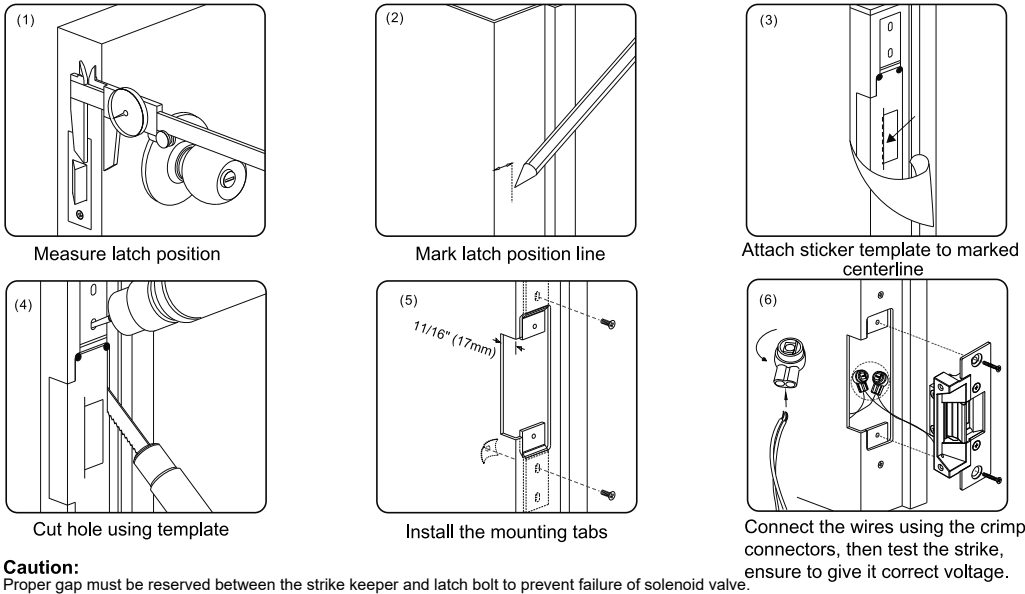
For 12VDC Operation:



For 24VDC Operation:



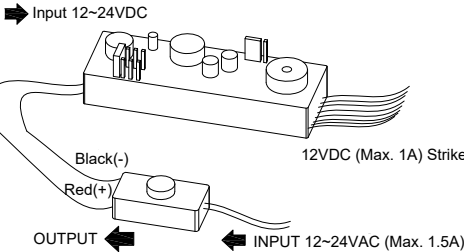
Installation Instructions (The example model shown below is GK1830A.)



Caution: Proper gap must be reserved between the strike keeper and latch bolt to prevent failure of solenoid valve.

Optional Accessory SM1224-TBZ

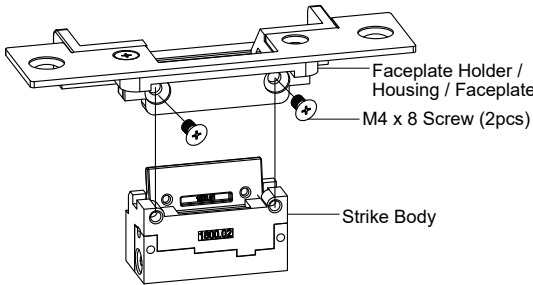
The SM1224-TBZ is a bridge rectifier with a built-in buzzer. It can stepped down and regulate incoming voltage to prevent damage to the electric locks caused by power supplies that are potentially unreliable.



- Power Input: 12~24VDC/VAC
- Output Rating: 12VDC /1A
- Built-in piezo buzzer
- Selectable relock delay time (5, 15, 30, or 60 seconds)
- Red LED Output Indicator
- Output overload or short circuit protection
- Additional input for anti-tailgating function

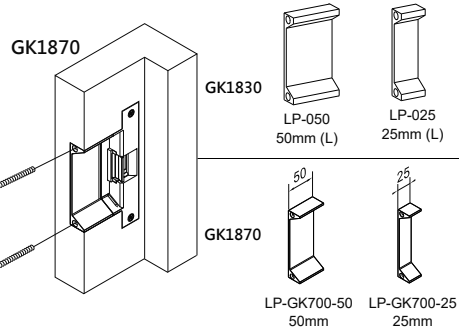
Assemble the Strike

Attach the faceplate holder/faceplate/housing to the strike body using the M4 x 8 screws.The GK1830 with faceplate option A is shown as example below.



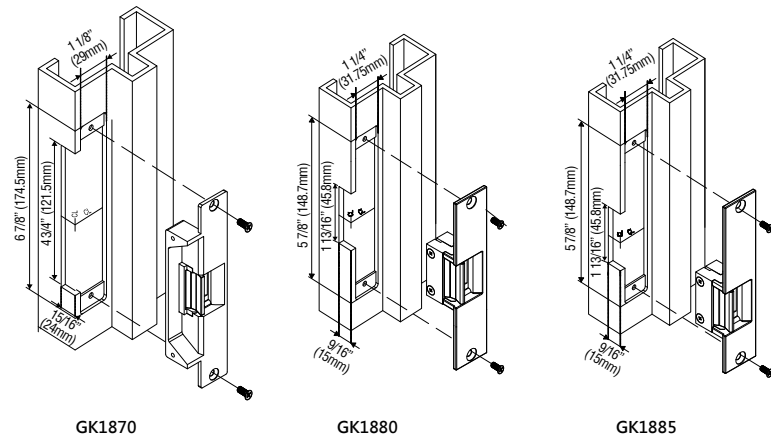
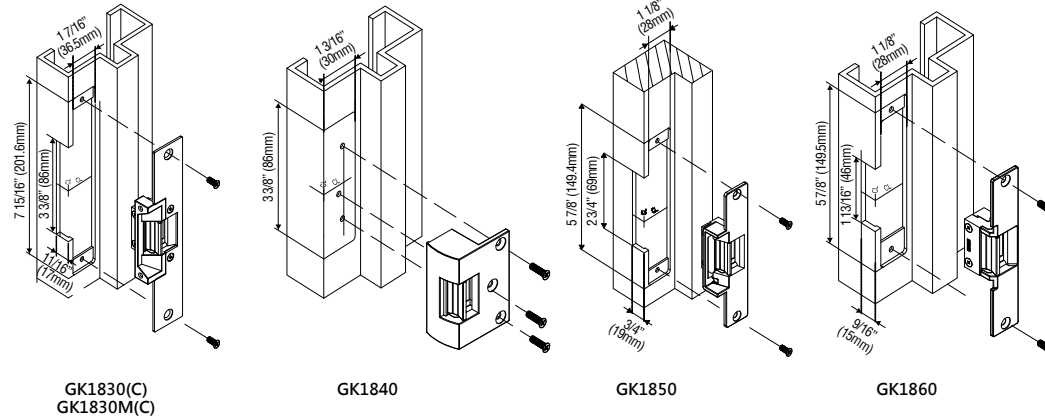
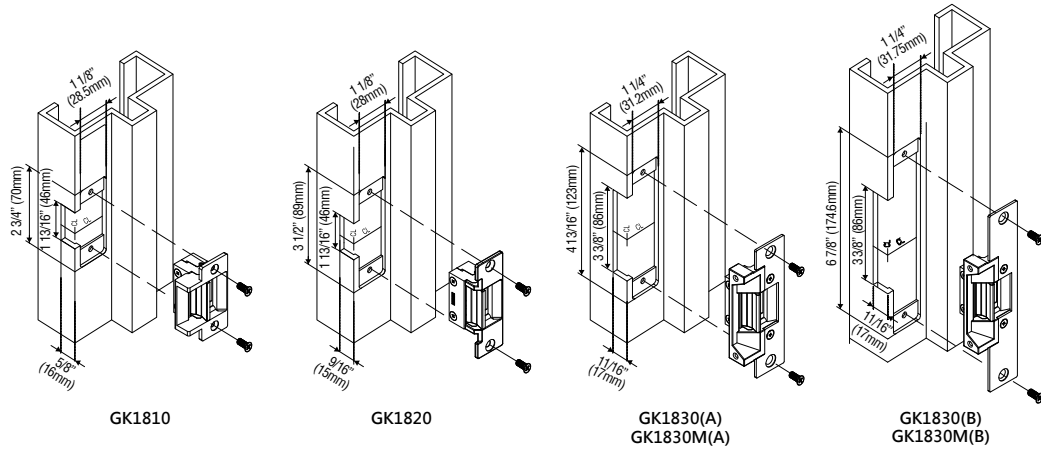
Optional Brackets For GK1830/GK1870 Only

Lip extension brackets are available for wider jambs.



## Installation Diagrams

GK1800 series electric strikes are all flush mounted except that GK1840 is surface mounted.



## Dimensions

