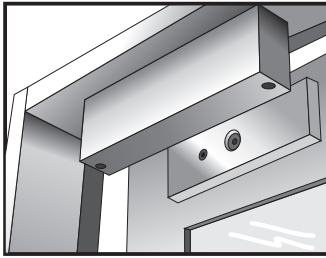


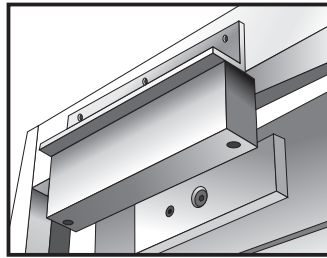
# Electromagnetic Lock Installation Instruction (Indoor Series)

## Optional Bracket

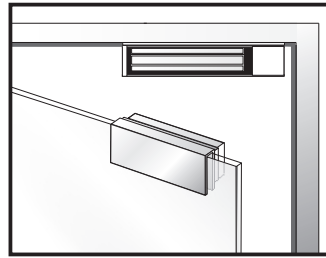
Bracket installation is according to door swing direction and door frame type ,e. g. narrow frame door , frameless glass door, inswing door , etc.



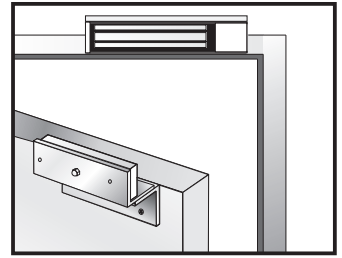
Regular Installation  
(outswing door)



L-bracket for narrow  
frame (optional)



U-bracket for frameless  
glass door (optional)



LZ-bracket for inswing  
door (optional)

## Regular Installation

**1**

Fold the mounting template 90°

Template

**2**

Place the template to the proper position of the door and frame. Mark the hole positions of the template on the door and frame.

**3**

Drill the holes according to the marks.

**4**

**Armature Plate**

Please install the armature plate as illustrated here. (Dimensions of the holes are depending on the door types as illustrated below.)

**Hollow Metal Door**

12.7mm 8mm

**Reinforced Door**

6.8mm for M8-1.25 thread

**Solid Door**

12.7mm 8mm 36mm

Drill a Ø8mm hole through door, on closing side enlarge to Ø12.7mm by a sexnut blot on the opening side.

Drill a Ø6.8mm hole and tap on closing side a M8x1.25 thread.

Drill a Ø8mm hole through door on closing side enlarge to Ø 12.7mm, by a sexnut blot on the opening side. The depth is 36mm.

**Recommendation:**

For Micro EM-locks (300 LBS), maximum thickness of door is 44 mm.

For Mini EM-locks (600 LBS), maximum thickness of door is 50 mm.

For Midi EM-locks (800 LBS), maximum thickness of door is 48 mm.

For Maxi EM-locks (1200 LBS), maximum thickness of door is 46 mm.

**5**

Rubber Washer

The rubber washer makes the surface of the armature plate adjustable in order to completely fit the surface of magnetic lock.

**6**

Fasten the mounting plate with the mounting screws. The position of the mounting plate should be adjustable.

**7**

Fix the mounting plate on the door with mounting screws

**8**

Allen wrench

Use the Allen wrench and fixing bolts to tighten the electromagnetic lock to mounting plate.

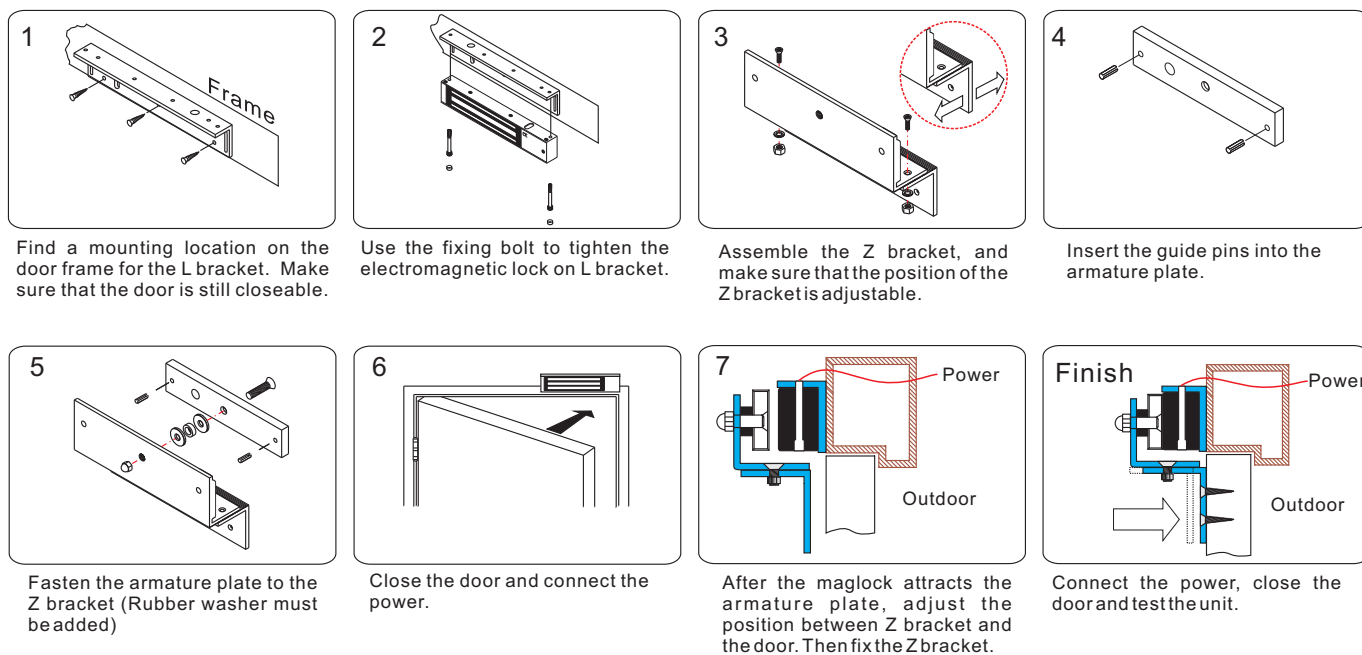
**9**

Power

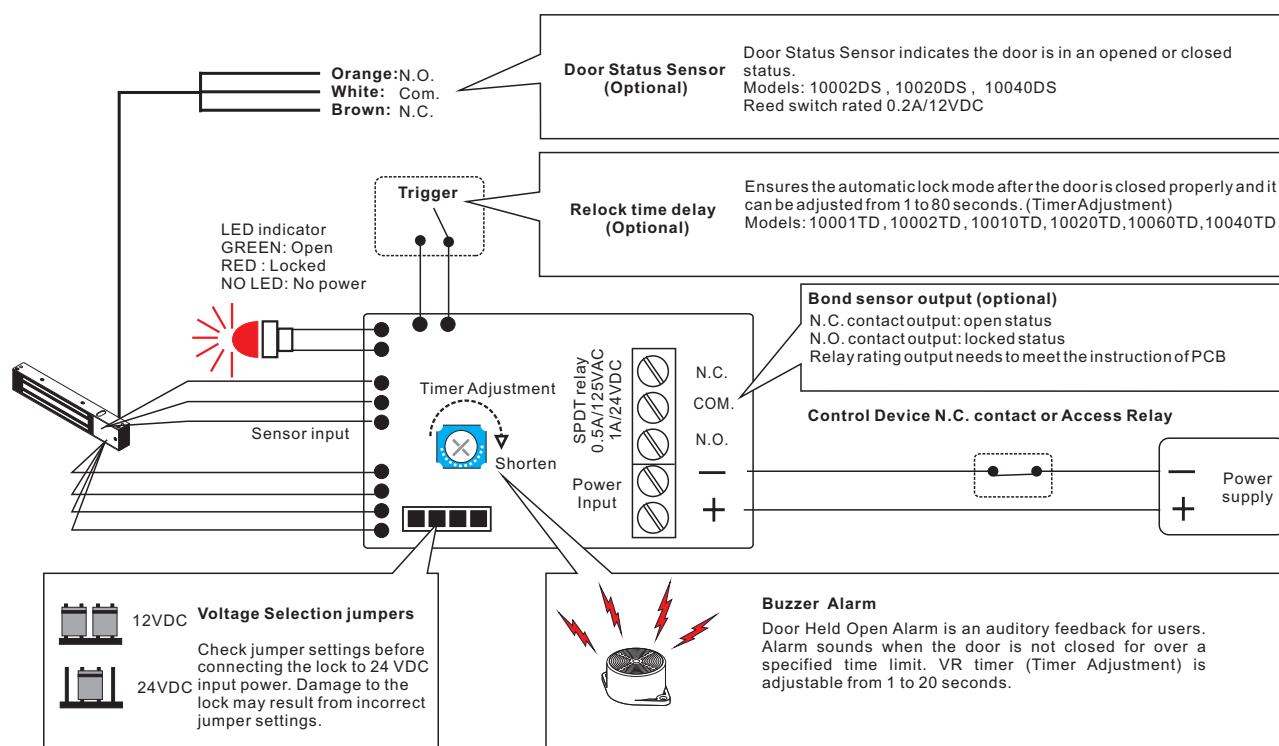
Outdoor

Connect the power and test the unit.

## LZ bracket for Inswing doors



## Connecting Diagram



## Trouble Shooting

Problem	Possible Cause	Solution
Door does not lock	No power	Make sure the wires are connected properly Check that the power supply is connected and works properly Make sure the lock switch is wired correctly (N.C.)
Low holding force	Poor contact between electromagnet and armature plate	Make sure if the armature plate is deformed Make sure if the rubber washer was used between the bracket lock and armature plate Make sure the contact surfaces of the electromagnet and armature plate are clean and free from dust
	Low voltage or incorrect voltage setting	Check the electromagnet lock is set for the correct voltage. Check the voltage at the of input electromagnetic locks. If low, determine if the correct wire gauge is being used to prevent excessive voltage drop.
Sensor output is not functioning	A secondary diode was installed across the electromagnetic lock	Remove any diode installed across the magnet for "spike" suppression. (The magnet is fitted with a metal oxide varistor to prevent back EMF)
	Misalignment between the armature plate and electromagnetic lock	Make sure the armature plate and electromagnetic lock are aligned correctly