

CK150 Motorized Cabinet Lock Operation Manual

Specifications and Wiring Diagram (Polarity free)

CK150 Series

Operating Voltage	12~24VAC/DC
Voltage Tolerance	±15%
Current Draw	Holding:10mA/12VDC, 10mA/24VDC Pull in:70mA/12VDC, 70mA/24VDC
Operating Temperature Range	-10°C~+45°C
Humidity	0~85%
Operating Mode	Fail-Secure
Material	Polyamide

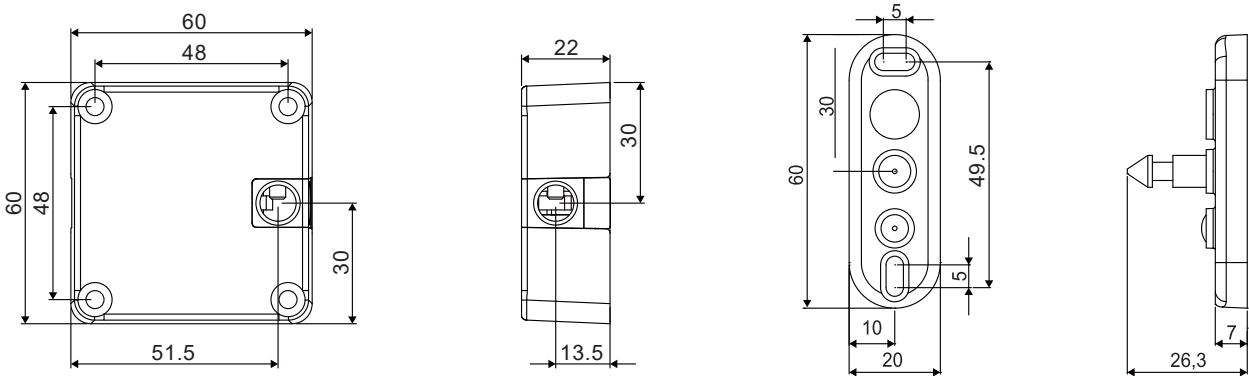
CK150 Motorized cabinet lock, fail-secure type is half the size of adult's palm.

It includes door status output to let the users easy recognize the current situation."Motor and spring" feature, pushes door open and it does not get stuck.

It can be installed to closets, lockers and small filing cabinets, etc.

The CK150 provides full voltage application in 12~24VAC/DC and it consumes little power without causing any power burden, it is most suitable for places with a large number of lockers and drawers such as gyms or offices.

Unit:mm



Applications

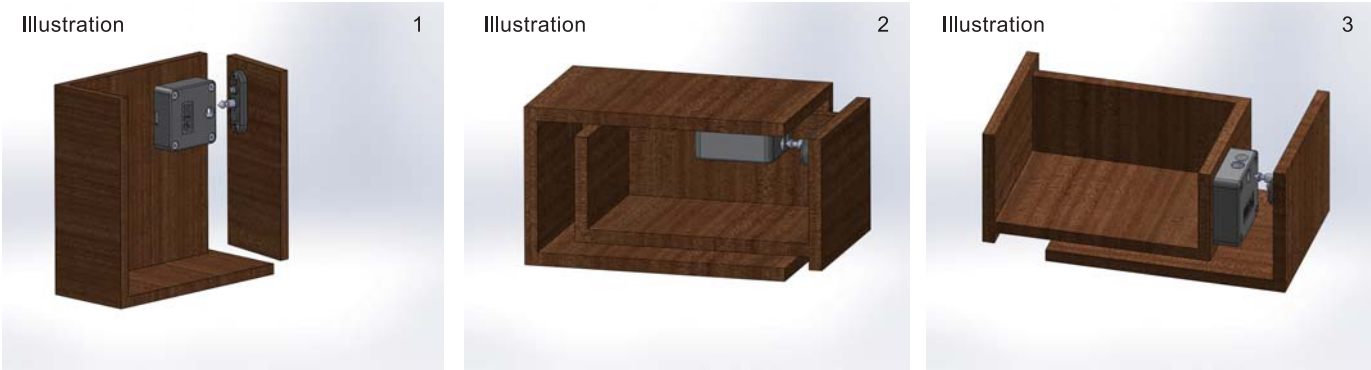


Illustration 1 & 2

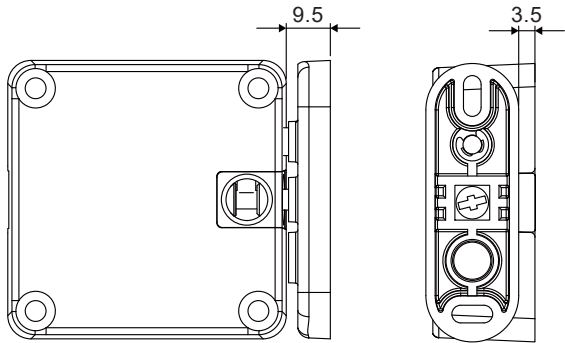
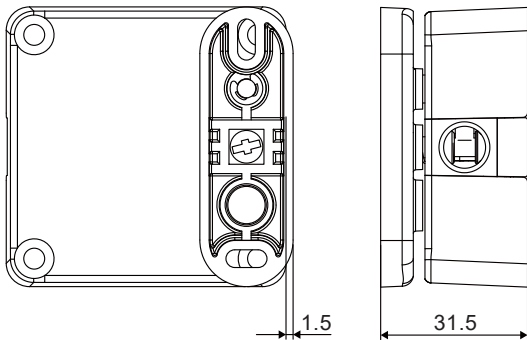
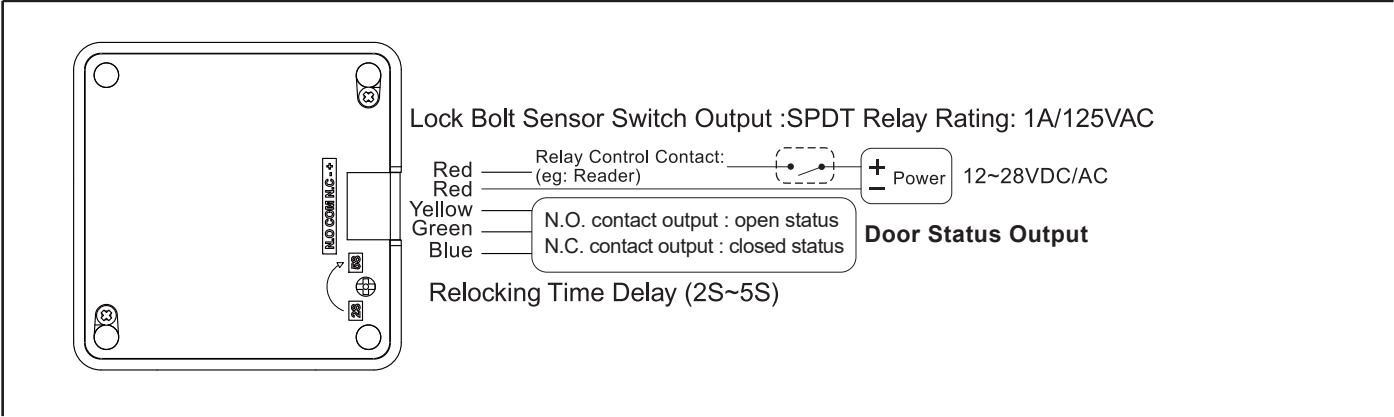


Illustration 3



Wiring Diagram



Relock Time Delay

