

CP-33BZ-LB Series

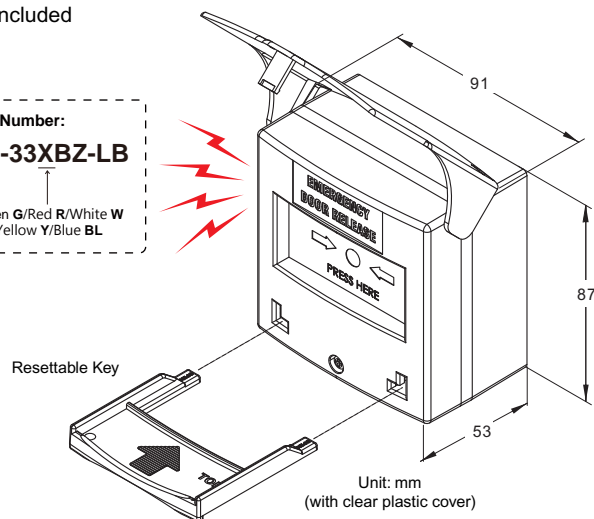
Resettable Call Point Operation Manual

(Blue Backlight & Built-in Buzzer)

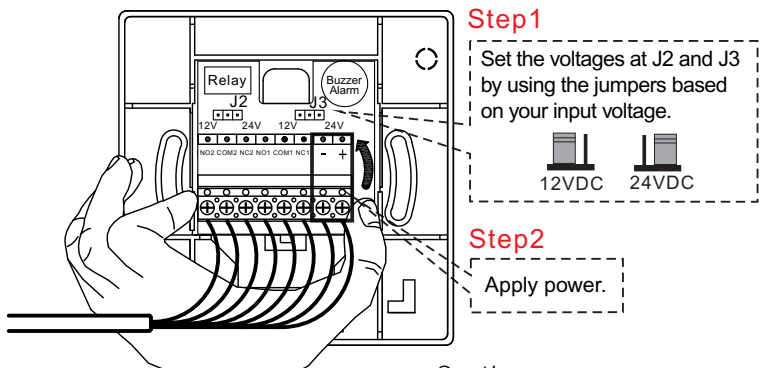
- Operating voltage: 12/24VDC (factory default 24VDC)
- Dimensions: 87x91x53 mm (with clear plastic cover)
- Contact resistance: 100mΩ
- Rating: Up to 5A 125/250 VAC
- Double pole (switch 1 (NC/COM/NO), switch 2 1A at 30VDC)
- Backlight illumination: Blue
- Built-in buzzer: 80dB
- Plastic case: Green / Red / White / Yellow / Blue
- Resettable key included

Part Number:
CP-33XBZ-LB

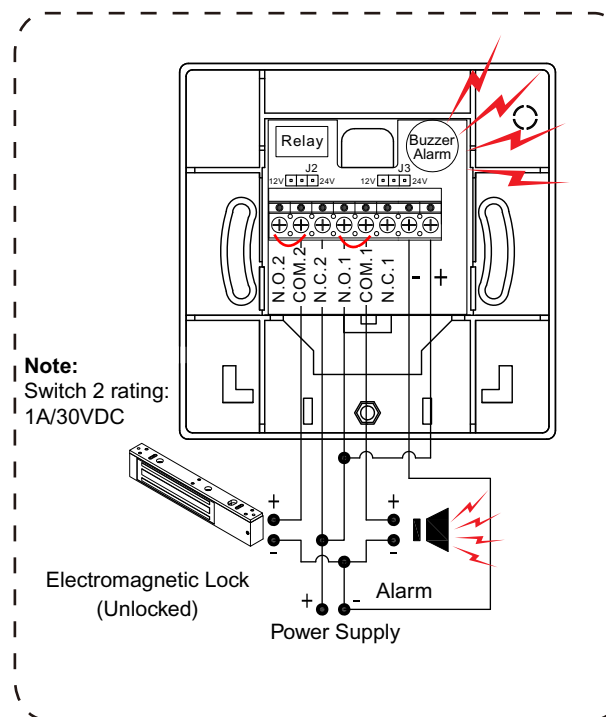
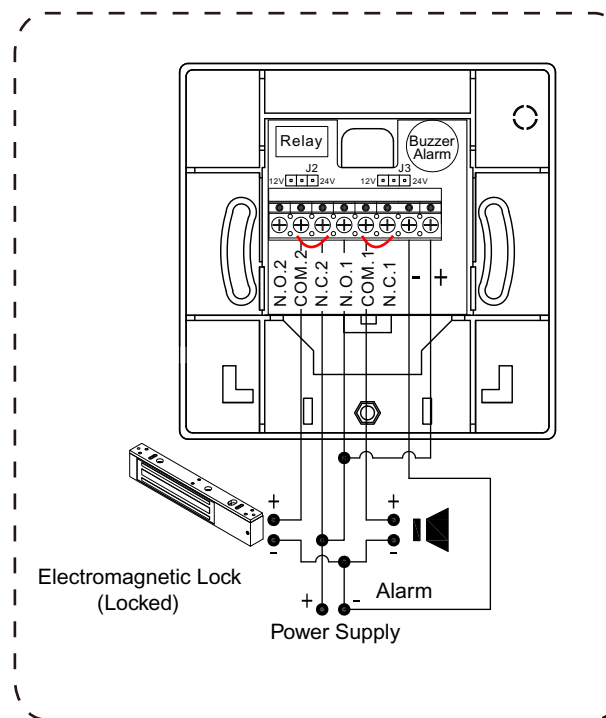
Green G/Red R/White W
Yellow Y/Blue BL



CP-33BZ-LB Series with Detachable Terminal Blocks



Caution:
Voltage settings for J2 and J3 must be the same.
Failure to correctly set the input voltage will cause damage to the product.



Note:
Switch 2 rating:
1A/30VDC

