

Electric Strikes

GK450/480 Series

Durable, Versatile Strikes for Residential and Business



The GK450/480 series ANSI electric strike is designed for use with cylindrical locksets and can be installed in metal and wood door frames. It includes an optional latch monitor and is field reversible for fail-safe or fail-secure operation.

Standard Features

- Non-handed fully reversible
- Field reversible fail-safe or fail-secure
- Static strength 1,500 lbs (680Kg)
- Dynamic strength 70 ft-lbs
- Endurance 100,000 cycles UL tested, 1,000,000 cycles factory tested
- Brushed stainless steel (US32D) finish

Optional Feature

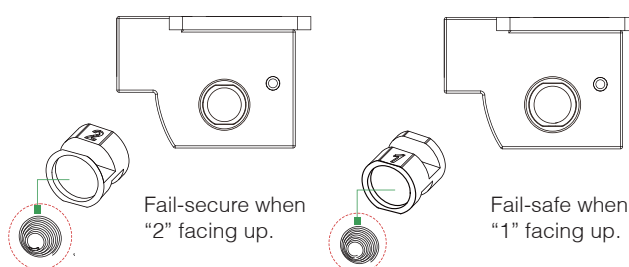
- Latch monitor

Patents, Approvals, and Listings

- UL 1034 burglary resistant listed : BP10269
- UL 294 Access Control System listed: BP10269
- US Patent: 8,833,814 B2

Changing Fail-Safe / Fail-Secure

Fail-safe or fail-secure is field reversible by reversing the round screw.



GIANNI INDUSTRIES, INC.

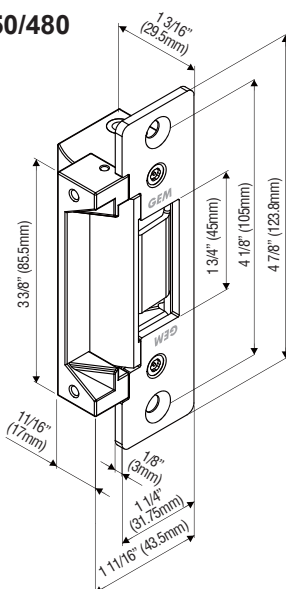
Tel: +886-2-2267-7986 Fax: +886-2-2267-9876
www.gianni.com.tw inquiry1@gianni.com.tw

GK450/480 Series ANSI Electric Strikes

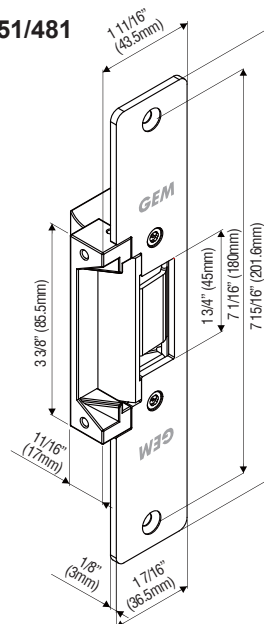
Models	Voltage (VDC)	Current Draw	Latch Throw	Optional Latch Monitor	Reversible Fail-Safe Or Fail-Secure	Frame	Body Construction
GK450 GK450-ST	Dual 12/24	300mA/12VDC, 150mA/24VDC	9/16" (15mm)	●	●	Hollow Metal	Zinc alloy Stainless steel
GK451 GK451-ST	Dual 12/24	300mA/12VDC, 150mA/24VDC	9/16" (15mm)	●	●	Wood	Zinc alloy Stainless steel
GK480 GK480-ST	Dual 12/24	300mA/12VDC, 150mA/24VDC	3/4" (19mm)	●	●	Hollow Metal	Zinc alloy Stainless steel
GK481 GK481-ST	Dual 12/24	300mA/12VDC, 150mA/24VDC	3/4" (19mm)	●	●	Wood	Zinc alloy Stainless steel

Dimensions

GK450/480



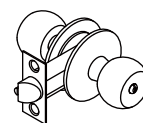
GK451/481



Lockset Application

(Note: Lockset is Not sold with electric strike model.)

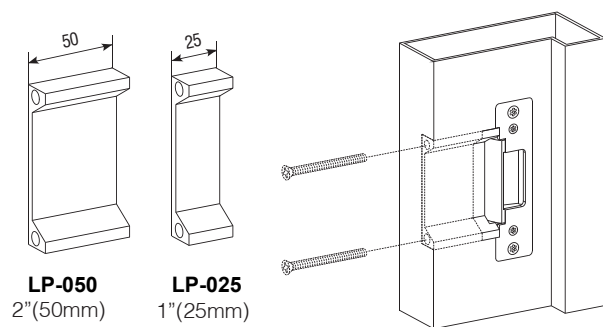
Electric Strike Models	Locksets
GK450, GK480, GK451, GK481	Cylindrical Lockset with center lined latchbolt



*Above models include model number with or without the "M" and/or "ST" suffix.

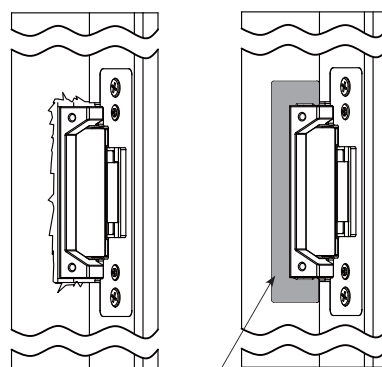
Accessories

Lip Extensions (Option)



Lip extensions are available to meet the needs of a particular jamb width.

Trim Plate



Trim plate

Trim plate is used to cover any imperfections caused while prepping the frame cut out.

Warranty

The product is warranted against defects in material and workmanship while used in normal service for a period of 3 years from the date of sale to the original client. The GEM policy is one of continual development and improvement; therefore GEM reserves the right to change specifications without notice.