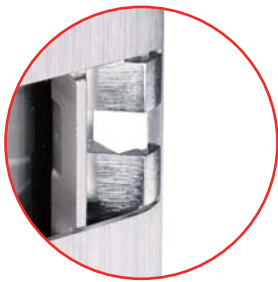


# Electric Strikes

## GK460 Series

Durable, Versatile Strikes for Residential and Business



Special ramp design for quick and easy installation



GK460

GK461



The GK460 series ANSI electric strikes are designed for use with cylindrical locksets and can be installed in metal and wood door frames. The special keeper ramp allows the latchbolt to enter or exit from the strike cavity without frame cutting. The strikes can be configured to fail-safe or fail-secure on site.

### Standard Features

- No frame cutting is required - Special ramp design allows the latchbolt to exit from an unmodified frame
- Non-handed fully reversible
- Field reversible fail-safe or fail-secure
- Static strength 1,500 lbs (680Kg)
- Dynamic strength 70 ft-lbs
- Endurance 250,000 cycles UL tested, 1,000,000 cycles factory tested
- Brushed stainless steel (US32D) finish

### Optional Features

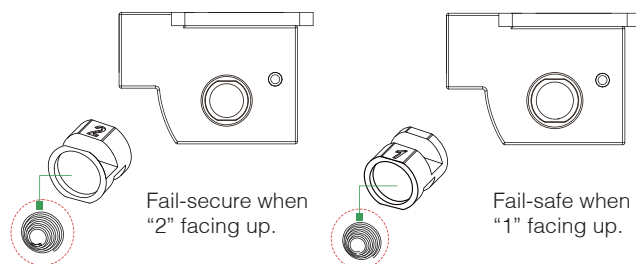
Latch monitor

### Patents, Approvals, and Listings

- UL 1034 burglary resistant listed: BP10269
- UL 294 Access Control System listed: BP10269

### Changing Fail-Safe / Fail-Secure



Fail-safe or fail-secure is field reversible by reversing the round screw.



GIANNI INDUSTRIES, INC.

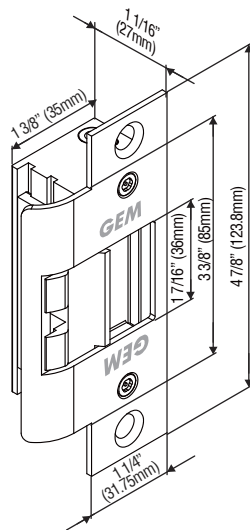
Tel: +886-2-2267-7986 Fax: +886-2-2267-9876  
www.gianni.com.tw inquiry1@gianni.com.tw

## GK460 Series ANSI Electric Strikes

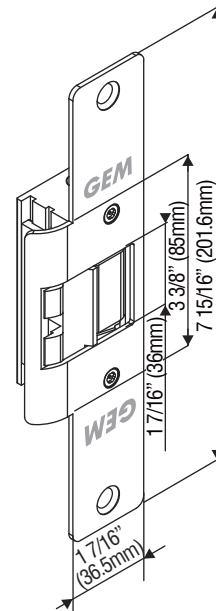
Models	Voltage (VDC)	Latch Throw	Current Draw	Optional Latch Monitor	Special Ramp Design	Reversible Fail-Safe Or Fail-Secure	Frame	Body Construction
<b>GK460</b> 	dual 12/24	9/16" (15mm)	300mA/12VDC 150mA/24VDC	●	●	●	Hollow Metal	Zinc alloy
<b>GK461</b> 	dual 12/24	9/16" (15mm)	300mA/12VDC 150mA/24VDC	●	●	●	Wood	Zinc alloy

## Dimensions

**GK460**



**GK461**



### Warranty

The product is warranted against defects in material and workmanship while used in normal service for a period of 3 years from the date of sale to the original client. The GEM policy is one of continual development and improvement; therefore GEM reserves the right to change specifications without notice.