

RTS Series Wave Sense Infrared Exit Devices

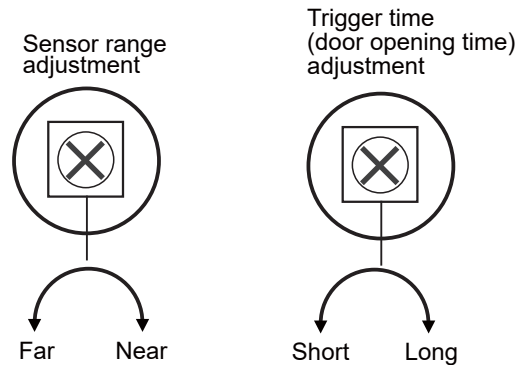
RTS-850 / RTS-860 / RTS-870 / RTS-880

Installation Instructions

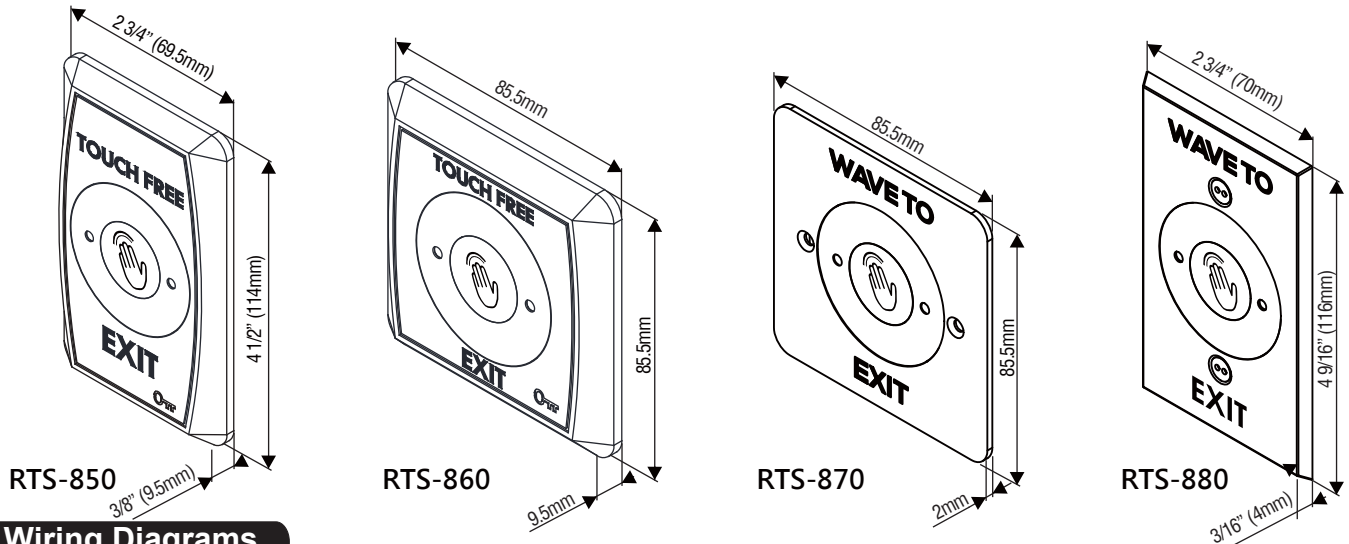
Specifications

- Operating Voltage: 12~24VDC
- Current Draw: Pull in 20mA/12VDC; Holding 30mA/12VDC
Pull in 30mA/24VDC; Holding 40mA/24VDC
- Relay Rating: 1A/125VAC, 2A/30VDC
- Operating Temperature: -10~+70°C
- Ambient Humidity: 5~95%
- Dual LED, illuminated sensor indicates status:
Standby (Red), Active (Green)
- IR sense technology: Active with wave of the hand
- Sensor Range: 3~15 cm (±10%)
- Adjustable Output Time: 1~60 seconds
- Faceplate Finish: RTS-850/860: Plastic ABS
RTS-870/880: Stainless steel

Adjusting Sensor Range & Trigger Time



Dimensions



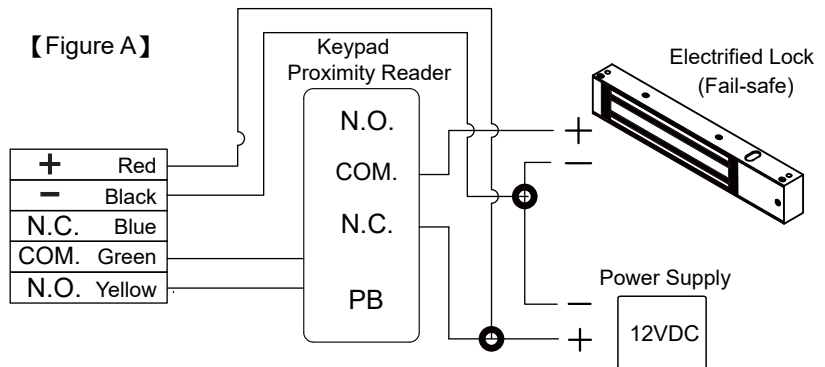
Wiring Diagrams

The RTS series wave sense infrared exit device includes one set of output contacts NC/NO/COM. It can directly control electrical devices (e.g. electrified locks) or works with digital keypads or proximity readers. Please refer to the wiring instructions below.

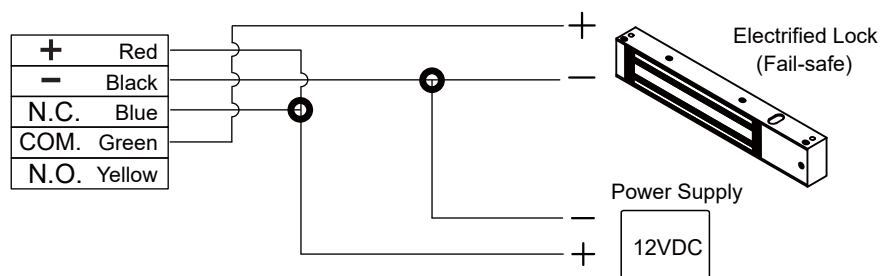
In Figure A, the RTS series connects to the Request-to-Exit input terminal of the access control system. Relay output time can be reduced to a minimum of 0.5 seconds.

In Figure B, the RTS series controls a fail-safe locking device. If it controls a fail-secure lock, connect to the NO contact. Relay output time is door opening time.

【 Figure A 】



【 Figure B 】



Caution:

To avoid wire burning, do not exceed maximum relay rating: **1A/30VDC**.