

Application

Easy to install and specifically designed to prevent unauthorized access of emergency exit doors and risk of theft and burglary in airports, hotels, and other public places. It can also be use in hospitals, nursing homes or rehabilitation centers to prevent unauthorized exit by patients.

It also features 95db loud buzzer alarm, with a pressure push activates the egress and triggers a warning or alert signal to the security systems. Adjustable 1-30 second time delay. Satin Silver, Red and Green Colors are also available.

Outdoor Applications: Keyless Entry Access Control

Indoor Applications: PSU-100UL Power Supply Unit
EM Series Electromagnet Locks
DL-200 Door Loops



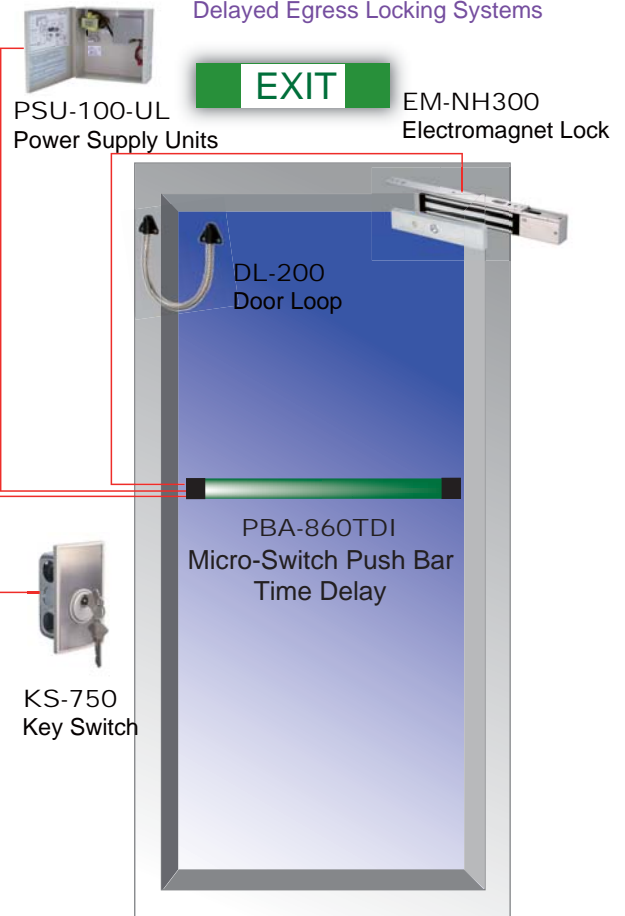
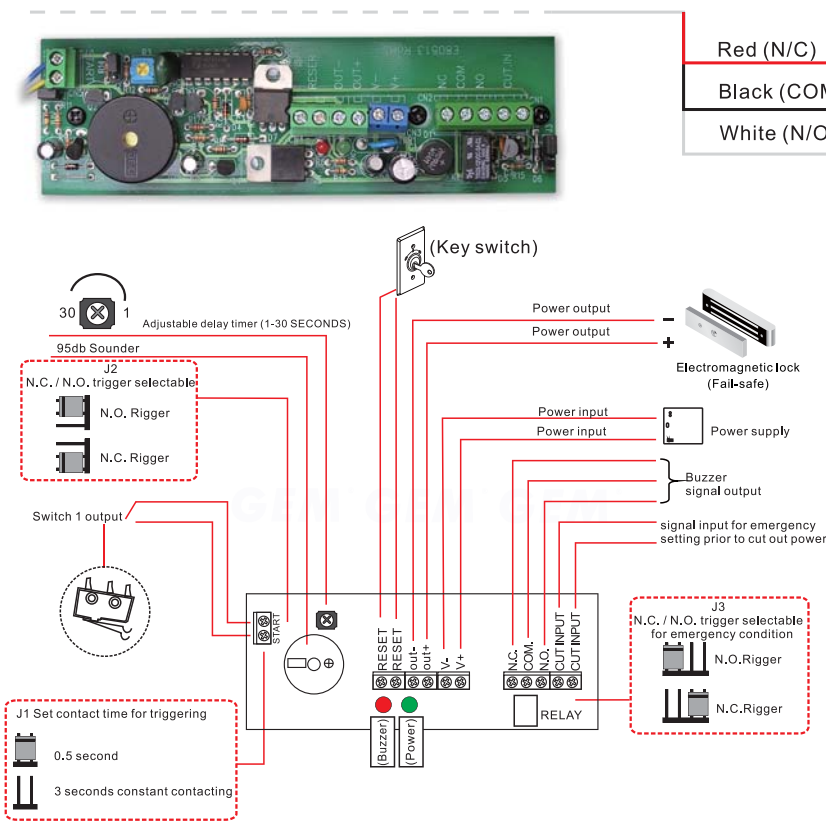
PBA-860TDI Delayed Egress Locking System

Switch 2 output

- Red (N/C)
- Black (COM.)
- White (N/O)



PBA-860TDI Delayed Egress Locking Systems



Manual Instructions

- * P1 , P2 setting for trigger N.O. or N.C. contact and timer adjustable.
- * OUT +/- voltage output eliminated after 1 - 30 seconds delay timer set, an over pass timer setting OUT +/- prior to cut out power instantly when emergency (CUT INPUT) condition.
- * P3 setting for trigger N C or N O contact on emergency condition
- * Buzzer and signal output for termination control purposer, contact rated 3A@12VDC or 1A@125VAC
- * RESET for stand by activation
- * Electromagnet lock is fail-safe version, recommend to use UL approved power supply unit for UPS (uninterruption Power Supply) system integration at any time.