

Magnetic Contacts

Use for Door Position Detection



GMC-1012



GMC-1013



GMC-1021/GMC/1022



GMC-1032T



GMC-2022



GMC-2031



GMC-2071



GMC-2071AR



GMC-2071SDNU

GEM's GMC magnetic contacts enable access control systems to monitor the open or closed state of a door and are ideal for commercial application or industrial use.

Magnetic Contacts

Models	Loop Type	Reed Form	Closed Gap (mm)	Departure Gap (mm)	Maximum Initial Contact Resistance (Ohm)	Maximum Contact Rating (W)	Maximum Switching Voltage (VDC/VAC)	Maximum Switching Current (A)
GMC-1012	Closed	N/O	3/4 (19)	0.8 (20)	0.150	10	100	0.5
GMC-1013	Closed	N/O	1 (25)	1.1 (28)	0.150	10	100	0.5
GMC-1021	Closed	N/O	3/4 (19)	0.95 (24)	0.150	7.5	100	0.4
GMC-1022	Closed	N/O	0.85 (22)	0.95 (24)	0.150	7.5	100	0.4
GMC-2022	Closed	N/O	1.18 (30)	1.3 (33)	0.150	10	100	0.5
GMC-2031	Closed	N/O	1.1 (28)	1.3 (33)	0.150	10	100	0.5
GMC-2071(AR) GMC-2071SDNU	Closed	N/O	1.5 (38)	1.65 (42)	0.150	7.5	100	0.4

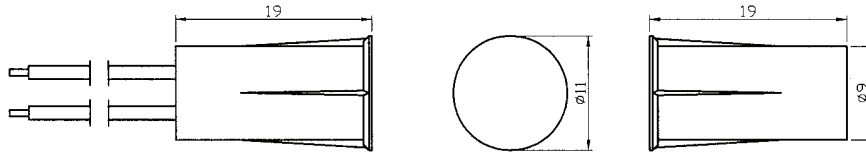
Models	Loop Type	Reed Form	Gap (total travel) (mm)	Maximum Initial Contact Resistance (Ohm)	Maximum Contact Rating (W)	Maximum Switching Voltage (VDC/VAC)	Maximum Switching Current (A)
GMC-1032T	Closed	N/O	1/4 (6)	0.150	10	100	0.5



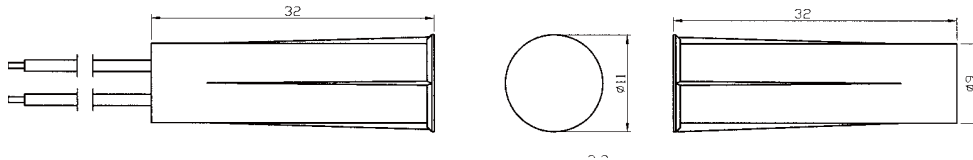
Dimensions

Unit: mm

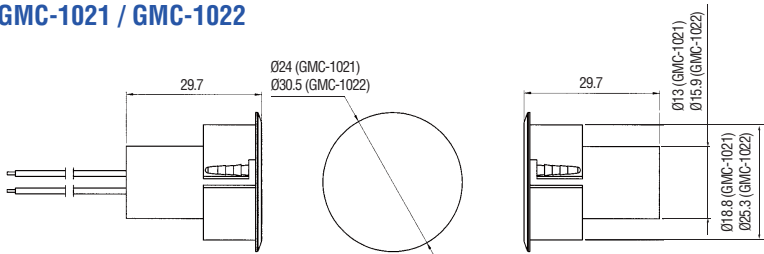
GMC-1012



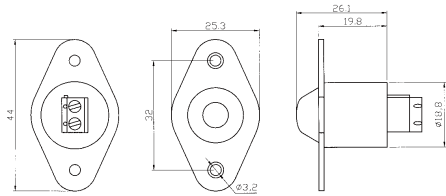
GMC-1013



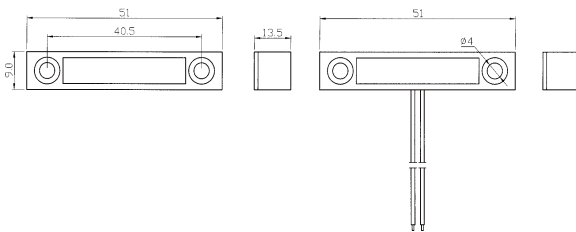
GMC-1021 / GMC-1022



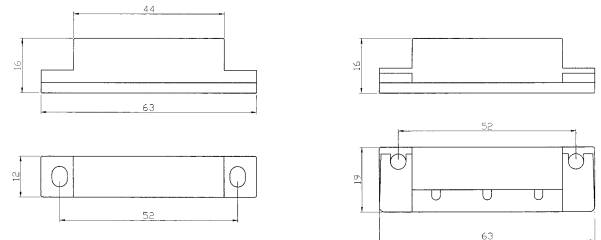
GMC-1032T



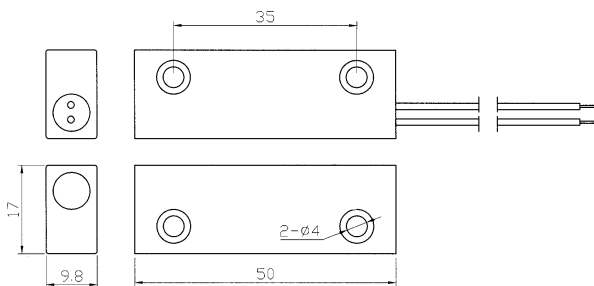
GMC-2022



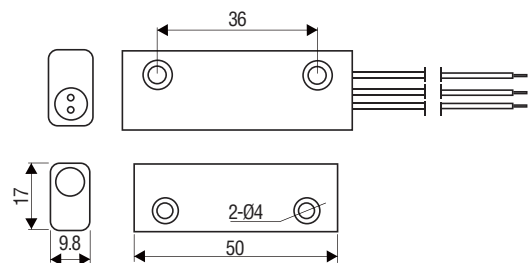
GMC-2031



GMC-2071/GMC-2071AR



GMC-2071SDNU



Warranty

The product is warranted against defects in material and workmanship while used in normal service for a period of 1 year from the date of sale to the original customer.

The GEM policy is one of continual development and improvement; therefore GEM reserves the right to change specifications without notice.