

Key Switches

Simple Solution for Exit, Door Release,
Mechanical Override or Reset



ANSI Standard Key Switch
Fits ANSI standard single-gang
electrical boxes



European Standard Key Switch
Fits Euro standard single-gang
electrical boxes



Narrow Stile Key Switch
Ideal for narrow mullion
application

GEM key switches are often used to control electric locks, shunt or activate security panels, or any similar requirements. They are compatible virtually with any system, and offer a secure and economic access control for a variety of applications.

Standard Features

- Easy to install and maintain
- Stainless steel faceplate
- SPDT or DPDT
- Momentary or alternative (maintained) switch available

Standard Options

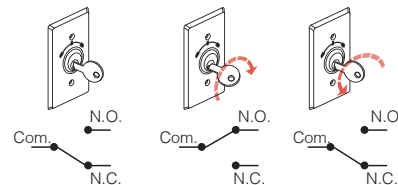
- 12 to 24VDC Red & Green LEDs
- Stainless steel or metal surface back box
- Key cylinder with keys

Warranty

The product is warranted against defects in material and workmanship while used in normal service for a period of 1 year from the date of sale to the original customer. The GEM policy is one of continual development and improvement; therefore GEM reserves the right to change specifications without notice.

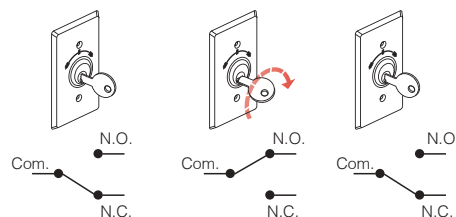
Alternate (Maintained) Action

Turning the key left or right actuates and latches the contact. Contact position is maintained until the key is inserted and turned again.



Momentary Action

Turning the key left or right momentarily actuates the contact.



ANSI Standard Key Switches

Models	Switch Rating	Contact	Switch Type	Options		
				Back Box	LED	Cylinder & Keys
KS-500	5A/125VAC	SPDT	Momentary	—	—	●
KS-700W	5A/125VAC	SPDT	Momentary or Alternate (Maintained)	●	—	●
KS-750	5A/125VAC	SPDT or DPDT	Alternate (Maintained)	●	●	●

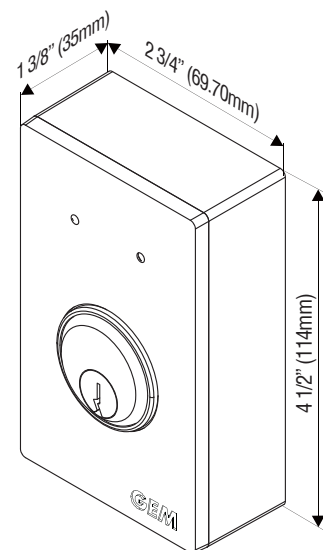
Note: For KS-750, SPDT switch model comes with LED.



Optional Accessories



Dimensions



European Standard Key Switches

Models	Switch Rating	Contact	Switch Type	Options		
				Back Box	LED	Cylinder & Keys
KS-7510A	4A/125VAC	SPDT	Momentary	—	—	Included
KS-800	5A/125VAC	SPDT or DPDT	Alternate (Maintained)	●	●	●
KS-810	5A/125VAC	SPDT or DPDT	Momentary	●	●	●
KS-860	5A/125VAC	SPDT	Momentary or Alternate (Maintained)	●	●	●

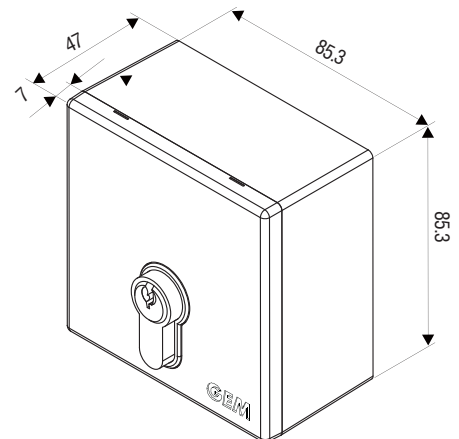
Note: For KS-800/810, SPDT switch model comes with LED.



Optional Accessories



Dimensions



All dimensions in mm

Narrow Stile Key Switches

Models	Switch Rating	Contact	Switch Type	Options		
				Back Box	LED	Cylinder & Keys
KS-900	5A/125VAC	SPDT or DPDT	Alternate (Maintained)	●	●	●
KS-910	5A/125VAC	SPDT or DPDT	Momentary	●	●	●

Note: SPDT switch model comes with LED.

KS-900 / KS-910



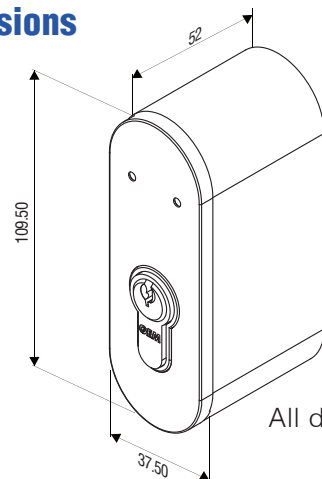
Optional Accessories



SMB-370ALU
Chromium anodized back box,
110.5 x 47 x 39mm

ECY-45HT-5
Euro-profile key cylinder and keys

Dimensions

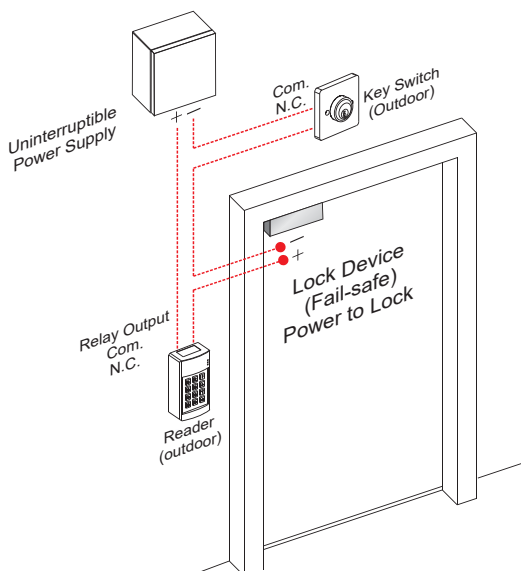


All dimensions in mm

Applications

GEM key switch assemblies offer an economic solution for a variety of access control applications.

Connection to fail-safe locking devices



Connection to fail-secure locking devices

