

Electromechanical Mortise Lock

GML800 Series

Safe, Secure, Easy to Operate



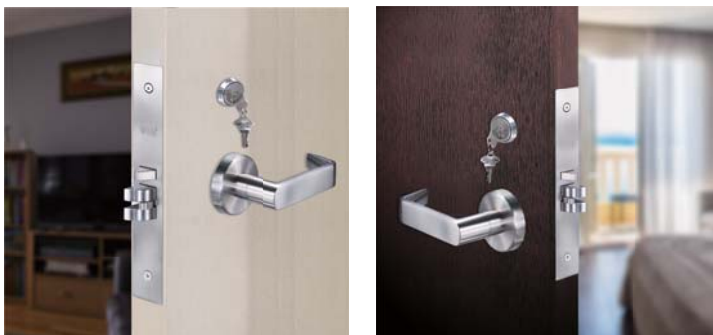
The GML800 series is an electromechanical mortise lock ideal for a wide range of applications and available with various monitoring functions. It can operate standalone or can be readily integrated into sophisticated access control systems.

Standard Features

- Field reversible latchbolt to suit left hand (LH) and right hand (RH) doors
- Field changeable fail-safe/fail-secure mode
- Monitoring options: Lock status, Request-to-Exit (inside/ outside lever operation), Door status
- Cylinder and keys included

Specifications

- Operating Voltage: Dual voltage 12/24 VDC
- Current Draw: 600mA/12VDC, 300mA/24VDC
- Temperature: +14° to 113°F (-10° to +45°C)
- Humidity: 0 to 95% Non-Condensing
- Backset: 2 3/4" (70mm) standard
- Monitoring Outputs:
 - Door Status, 1A/40VDC
 - Request-to-Exit, 1A/40VDC
 - Lock Status, 1A/40VDC
- Finish: Brushed stainless steel (US32D)



Optional Accessory



DL-360TB

Armored Door Loop with PC Board + Terminal Block Connector

GML800 Series Electromechanical Mortise Lock

Models	Voltage (VDC)	Monitoring Options	Lever Options
GML800	Dual 12/24	M, MDS	—
GML800-SET	Dual 12/24	M, MDS	L811, L812, L814

M: Lock status and Request-to-Exit monitor, **MDS:** Door status, Lock status and Request-to-Exit monitor

GML800-SET with Lever Options



GEM800-SET with L811 Lever Option

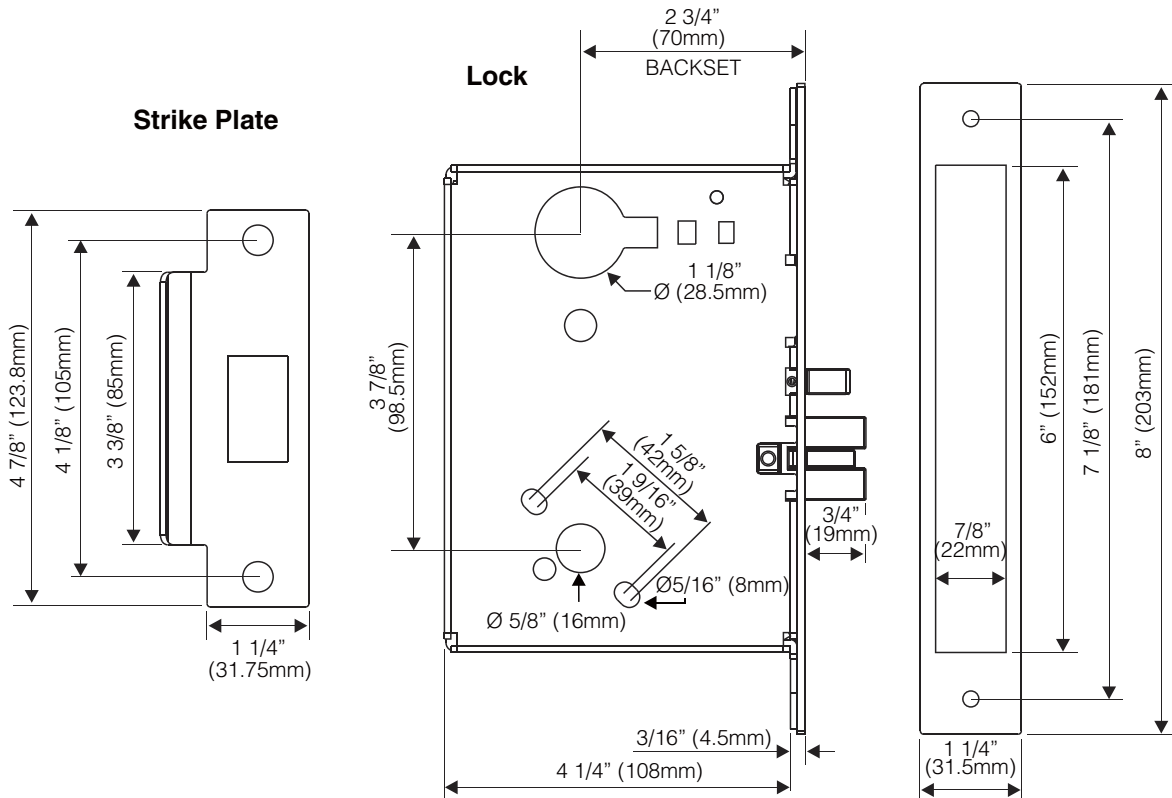


GEM800-SET with L812 Lever Option



GEM800-SET with L814 Lever Option

Dimensions



Warranty

The product is warranted against defects in material and workmanship while used in normal service for a period of 5 year from the date of sale to the original client. The GEM policy is one of continual development and improvement ; therefore GEM reserves the right to change specifications without notice.